



excel
without compromise.

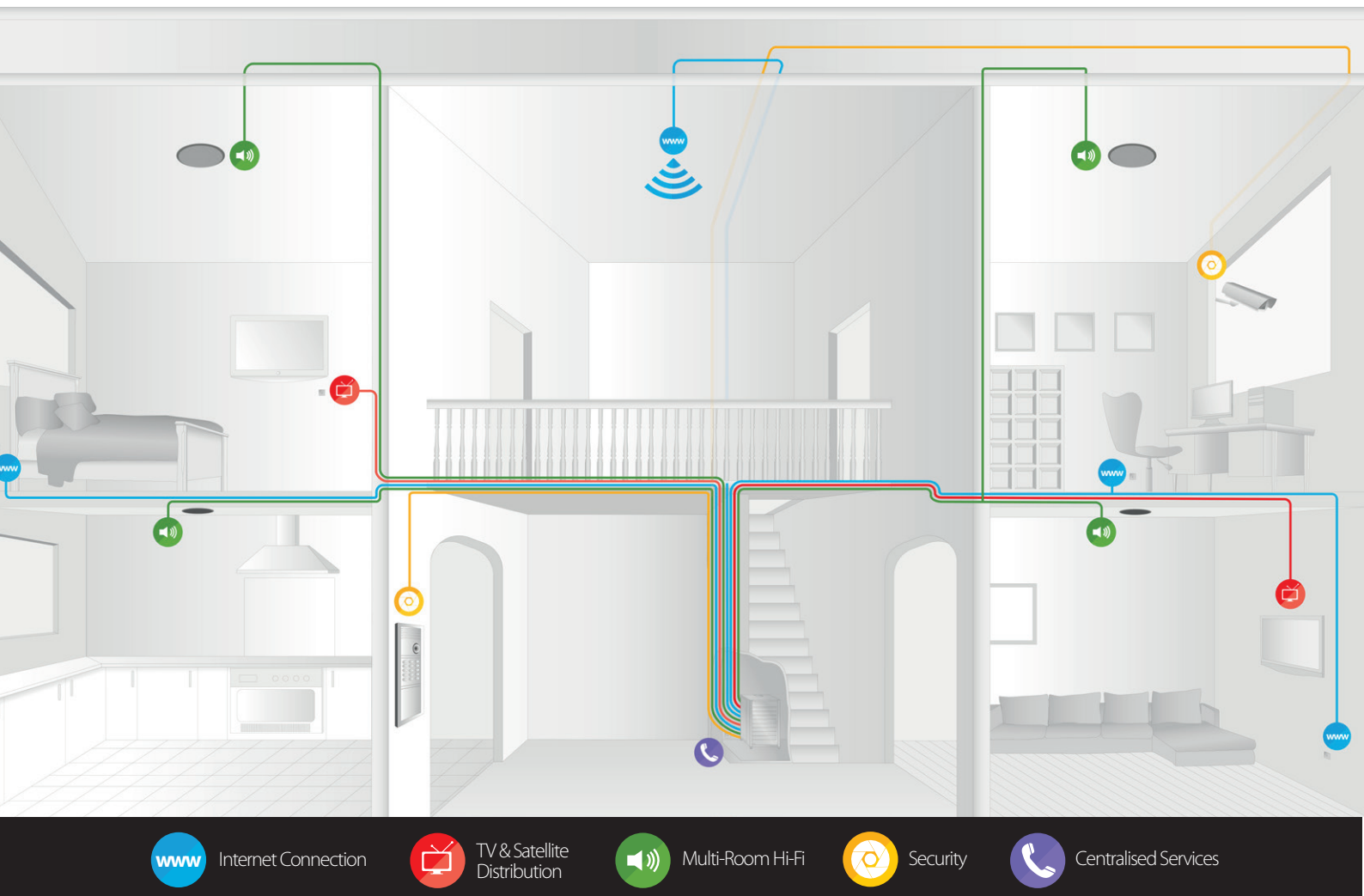
RESIDENTIAL/SoHo **CABLING SOLUTIONS** from Excel

Connected Homes

Connected homes are becoming an increasingly active part of the construction and refurb market as the number of wired and wireless devices and systems within residences increases. This trend is being replicated by housing developers, self builders, student accommodation developers and for existing home owners who need to add more connectivity to their homes.

With the connected world and Internet of Things we expect to control devices from an app on a Smartphone, whether it's in the work environment or at home.

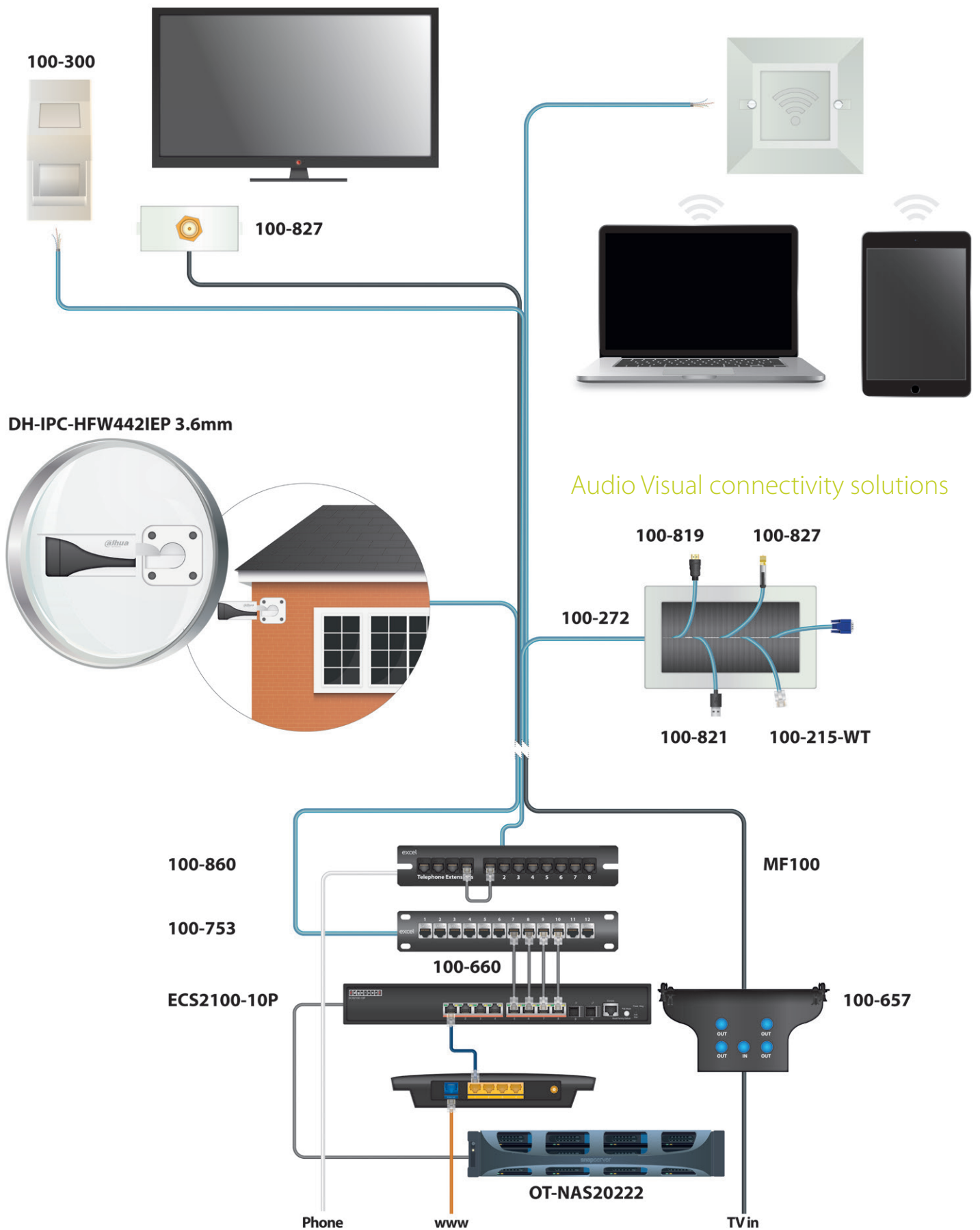
Nearly all new homes and apartments have an internet connection and the Excel Residential Cabling solution has been developed to provide a suite of products that have been designed for that purpose.



The above diagram shows a typical installation and the type of services that are needed around a home providing connectivity for such things as wireless, TV, sound, security, access control etc.

The Excel residential range includes new 25AWG Category 6 reduced diameter cable, flat and mini Category 6 patch leads, CATV splitter, a telephone panel, a range of AV Inserts, FFX surface mount boxes and faceplates, SoHo cabinet, the Verticab along with other products from the existing Excel range that are complementary to a residential installation.

The Excel residential solution



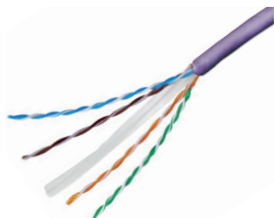
Audio Visual connectivity solutions

The Excel Residential/SoHo product range includes:

Excel Category 6 U/UTP Cable

Excel Category 6 U/UTP cable is designed for optimal support of High-Speed data protocols delivering 1 Gbps performance and therefore provides the perfect infrastructure for a home or SoHo to run multiple devices across a network.

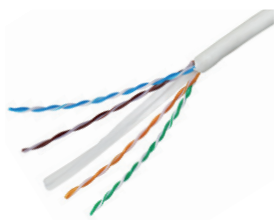
The new Excel Category 6 Cable – P/N 100-069 is specifically for use in a residential environment and has a limited permanent link of 60 metres. With a reduced overall diameter of just 4.6mm the cable consists of 8 colour coded 25AWG polyethylene insulated conductors.



Excel Category 6 U/UTP Residential Cable LSOH – 305m Box - Violet
100-609



Excel Category 6 U/UTP Cable LSOH - 305m Box - Violet
100-071



Excel Category 6 U/UTP Cable LSOH - 305m Box – White
100-074

Excel Category 5e cable is also available.

Excel Category 6 U/UTP Flat Patch Leads - Black

Excel Category 6 U/UTP patch leads are manufactured and tested to ISO & EN requirements for patch cord assemblies. Using these Excel patch cords will ensure the installed cabling system is compliant with the TIA/EIA, ISO & EN channel specification requirements and will provide optimum performance levels for Residential cabling.

The flat construction combined with slimline molded boots and short length make them ideal for the confined spaces within residential cabling system cabinets due to their enhanced bend radius. Each Patch lead is individually bagged and has a PVC outer sheath as standard and are ideal for use in Residential Market.

Excel Category 6 U/UTP Residential Flat Patch Leads – Black 200mm
100-660



Excel Category 6 U/UTP Residential Flat Patch Leads – Black 250mm
100-661

Excel Category 6 U/UTP Residential Flat Patch Leads – Black 500mm
100-662

Excel Category 6 (U/UTP) Mini Patch Leads - LSOH

Excel Category 6 U/UTP mini patch leads are manufactured and tested to ISO & EN requirements for patch cord assemblies. Using these Excel patch cords will ensure the installed cabling system is compliant with the TIA/EIA, ISO & EN channel specification requirements and will provide optimum performance levels of your Excel Category 6 cabling.

A choice of lengths and colours are available, colour coded slimline moulded boots are standard and each cable is supplied individually bagged. Each cable has a low smoke zero halogen outer sheath as standard and the small 3.8mm outside diameter makes them ideal for the data centre and high density environments.



Excel Category 6 U/UTP Mini Patch Lead LSOH, Booted, Grey 0.5m
100-504



Excel Category 6 U/UTP Mini Patch Lead LSOH, Booted, White 0.5m
100-513



Excel Category 6 U/UTP Mini Patch Lead LSOH, Booted, Blue 0.5m
100-518



Excel Category 6 U/UTP Mini Patch Lead LSOH, Booted, Yellow 0.5m
100-527

Excel Telephone Panel

The Excel Telephone Extension panel takes 1 telephone input to 4 x output RJ45 ports, as well as 8 x Category 6 ports, making it ideal for the Residential installation market, to distribute 'wired' telephone extensions over structurally installed data cables throughout a property.



Excel Telephone Extension/Category 6 Panel
100-860

Excel Keystone Patch Panel

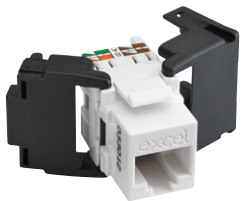
The Keystone patch panel allows for the housing of Keystone RJ45 toolless jacks. These panels are key to the distribution of data and AV systems throughout a residence.



Excel MicroLan Keystone Patch Panel Frame
100-753

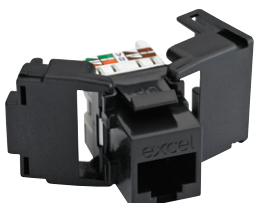
Excel Keystone Jacks

Taken from the existing Excel product range these high-performance and easy to terminate toolless jacks are ideal for use with the Excel Office range faceplates as well as other high-end faceplates that add a stylish look to any residential installation.



Excel Category 6 Unscreened Toolless Keystone Jack Butterfly Style – White

100-211



Excel Category 6 Unscreened Toolless Keystone Jack Butterfly Style – Black

100-212



Excel Category 6 Unscreened Low Profile Toolless Keystone Jack – Black

100-215-BK



Excel Category 6 Unscreened Low Profile Toolless Keystone Jack – White

100-215-WT

See www.excel-networking.com to see the full range of Category 6_A and Category 5 keystone jacks.

Excel
New Website
Launched
www.excel-networking.com

WWW

excel
without compromise.

A promotional banner for Excel's new website. The background is a dark, reflective surface showing a close-up of network ports and cables. The text "Excel" is in green, "New Website Launched" is in white, and the website URL "www.excel-networking.com" is in green. On the right, there is a white rounded rectangle containing the text "WWW" in green, with a white mouse cursor arrow pointing to it. Below this is the "excel" logo in white with a green dot over the 'x', and the tagline "without compromise." in white.

Excel Mounting Hardware

The Excel Office Range brings style and enhanced aesthetics to any Excel installation and are perfect for a residential installation.



Excel Office Single Gang Faceplate with 2 half blanks – White
100-270



Excel Office Double Gang Faceplate with 2 half blanks – White
100-271



Excel Office Angled Keystone Shutter - 25mm x 50mm - White
100-280

The Excel Office range is also available in Charcoal Grey – see www.excel-networking.com for full details

Excel CATV Splitter & Switch Mounting Plate

The Excel 4way video distribution splitter is manufactured from highest quality materials and is design to distribute incoming Satellite signal throughout the home or residence.

It has 1 F Type input and 4 outputs and supports frequencies between 5MHz and 2GHz.

Also available is a mounting plate complete with a Velcro strap to hold the small network switches within the Home Cabling Cabinet.



Excel 4 Way CATV Splitter
100-657



Excel Network Switch Mounting Plate
100-656

Excel AV Inserts

The Excel Audio Visual outlets provide a comprehensive range of options for both the Residential installation as well as the commercial office environment. The range includes both fly lead versions mounted into euromod size plates for use with the Excel Office range as well as keystone outlet versions for use within panels or other faceplate options with the use of the Excel Office angled shutter.

The fly lead versions have 150mm lengths of the requisite cable and are designed to provide flexible mounting options within restricted depth back boxes.



1 port 'F Type' Sat Coax Keystone Adaptor white
100-805



HDMI v1.4 Keystone Adaptor white
100-806



1 Port USB 3.0 Keystone Adaptor white A Type
100-807



1 Port USB 2.0 Keystone Adaptor white A Type
100-809



3.5mm Audio input Keystone Adaptor white
100-811



25x50 HDMI v1.4 snap in adaptor with 150mm fly lead
100-819



25x50 USB 2.0 snap in adaptor with 150mm fly lead
100-826



25x50 USB 3.0 snap in adaptor with 150mm fly lead
100-821



25x50 SVGA snap in adaptor with 150mm fly lead
100-828



25x50 F Type Sat Coax snap in adaptor
100-827



25x50 3.5mm Audio snap in adaptor
100-818



Brush strip black for Single Gang plate (1 pair)
100-272
(Doesn't include the face plate)



Brush strip black for Double Gang plate (1 pair)
100-277

Fibre in the home

With the routing of cables it can be surprising how fast you exceed the 90mtr link length associated with structured cabling. Fibre optic cables are small in diameter, offer exceptional performance characteristics and can be run over a much greater distance than copper cables.

Excel FTTX Surface mount box and faceplate

The Excel FTTX Surface mount box and faceplate has been designed due to the increasing amount of Passive Optical LAN and FTTX applications such as, Fibre to the Home or Fibre to the Desk, requiring the high speed connections provided by Optical Fibre. The boxes are 86.2mm high x 86.2mm wide and 22mm deep.

They provide the flexibility by having a number of singlemode options, coming either unloaded, with 2 SCAPC simplex adapters, 1 LCAPC duplex adapter or 2 LCAPC duplex adapters.

Inside the surface mount box there are a number of fingers to manage a coil of fibre, to the adapter.



Unloaded surface mount box and faceplate
200-421



SC/APC surface mount box and faceplate
200-422



2 x LC/APC Duplex surface mount box and faceplate
200-423



1 x LC/APC Duplex surface mount box and faceplate
200-424

Excel Cabinets & Enclosures

Residential SoHo Cabinet

The Excel Residential SoHo cabinet has been designed to accommodate the 'Hub' of a modern home networking solution; it combines both the main patching field as well as active equipment used within a Residential/SoHo network.

Space and mounting points are available for an ISP router, (compatible with all major providers) Network Switch, CATV splitter along with main patching fields to distribute all these services and more throughout the residence.

The Excel Residential SoHo cabinet is 600mm high x 450mm wide x 150mm deep and is manufactured from 1mm mild steel. It comes with a lockable door for easy access and added security.



Excel Residential SoHo Cabinet – Black

100-655-BK

Excel Residential SoHo Cabinet – Grey/White

100-655-GW



Excel Verticab

The Excel Verticab offers a flexible solution for mounting equipment or patch panels, both copper and fibre in a variety of positions. This cabinet may be mounted on the wall, on the ceiling or in the floor void. The cabinet provides 3U deep mounting and 2U of shallow mounting to accommodate various patch panels and equipment. As standard the Excel Verticab includes cable securing and entry positions in an aesthetically pleasing enclosure. The hinged front cover is both lockable and supported by a gas strut.

The Excel Verticab is ideal for use as a consolidation point, small active equipment housing or as a Residential cabinet.

The Excel Verticab is 500mm high x 475mm wide x 140mm deep and provides a large hinged lockable door for easy access.



Excel Verticab

350-752



Environ Wall Racks

The Environ WR range of Wall Racks have been designed with strength, ease of use and aesthetics in mind. The range is extensive with a choice of depths and heights, as highlighted below and are available in a choice of Grey or Black. The Environ WR Racks can be delivered assembled or flat packed and are ideal for a larger Residential installations.

A full range of Excel accessories are available to complete cable or equipment installation from shelving through to ventilation and power distribution Units.



WR390 Series – 390mm Deep

U Size	Width (mm)	Overall Height (mm)	Depth (mm)	Part Number Grey	Part Number Grey Flat Pack	Part Number Black	Part Number Black Flat Pack
6U	600	368	390	WB6.390SG	WBFP6.390SG	WB6.390SG-BK	WBFP6.390SGB
9U	600	501	390	WB9.390SG	WBFP9.390SG	WB9.390SG-BK	WBFP9.390SGB
12U	600	635	390	WB12.390SG	WBFP12.390SG	WB12.390SG-BK	WBFP12.390SGB
15U	600	769	390	WB15.390SG	WBFP15.390SG	WB15.390SG-BK	WBFP15.390SGB
18U	600	901	390	WB18.390SG	WBFP18.390SG	WB18.390SG-BK	WBFP18.390SGB
21U	600	1037	390	WB21.390SG	WBFP21.390SG	WB21.390SG-BK	WBFP21.390SGB

WR500 Series – 500mm Deep

U Size	Width (mm)	Overall Height (mm)	Depth (mm)	Part Number Grey	Part Number Grey Flat Pack	Part Number Black	Part Number Black Flat Pack
6U	600	368	500	WB6.5SG	WBFP6.5SG	WB6.5SGB	WBFP6.5SGB
9U	600	501	500	WB9.5SG	WBFP9.5SG	WB9.5SGB	WBFP9.5SGB
12U	600	635	500	WB12.5SG	WBFP12.5SG	WB12.5SGB	WBFP12.5SGB
15U	600	769	500	WB15.5SG	WBFP15.5SG	WB15.5SGB	WBFP15.5SGB
18U	600	901	500	WB18.5SG	WBFP18.5SG	WB18.5SGB	WBFP18.5SGB
21U	600	1037	500	WB21.5SG	WBFP21.5SG	WB21.5SGB	WBFP21.5SGB

WR600 Series – 600mm Deep

U Size	Width (mm)	Overall Height (mm)	Depth (mm)	Part Number Grey	Part Number Grey Flat Pack	Part Number Black	Part Number Black Flat Pack
6U	600	368	600	WB6.6SG	WBFP6.6SG	WB6.6SGB	WBFP6.6SGB
9U	600	501	600	WB9.6SG	WBFP9.6SG	WB9.6SGB	WBFP9.6SGB
12U	600	635	600	WB12.6SG	WBFP12.6SG	WB12.6SGB	WBFP12.6SGB
15U	600	769	600	WB15.6SG	WBFP15.6SG	WB15.6SGB	WBFP15.6SGB
18U	600	901	600	WB18.6SG	WBFP18.6SG	WB18.6SGB	WBFP18.6SGB
21U	600	1037	600	WB21.6SG	WBFP21.6SG	WB21.6SGB	WBFP21.6SGB

Network Switch/Router

Every installation requires a network switch suitable for residential purposes and we would recommend a couple of options from leading brands Edgecore Networks and Level One.



ECS2100-10P from Edgecore Networks

8 x Gigabit Ethernet ports and 2 x SFP (Fibre ports) allow for the distribution of services throughout a residence.



FEP0800 from Levelone

8-Port Fast Ethernet PoE Switch, 85W 10/100Mbps, full/half-duplex, auto-negotiation, auto-MDI/MDIX

Simple Plug and Play installation.



ISP Router

The final piece of the puzzle is a suitable ISP router that will be available from your broadband provider, eg BT or Virgin Media.

For further details and to view specification sheets of all of the products highlighted in this brochure please visit www.excel-networking.com

Head Office

Excel House
Junction Six Industrial Park
Electric Avenue
Birmingham B6 7JJ
England

Tel: +44 (0)121 326 7557

Email: sales@excel-networking.com

Middle East & Africa Headquarters

PO Box 293695
Office 11A, Gold Tower
Cluster I
Jumeirah Lake Towers
Dubai
United Arab Emirates

Tel: +971 4 421 4352

Email: salesme@excel-networking.com



excel
without compromise.

FS 547274
EMS 542863